



TECHNIA SOFTWARE

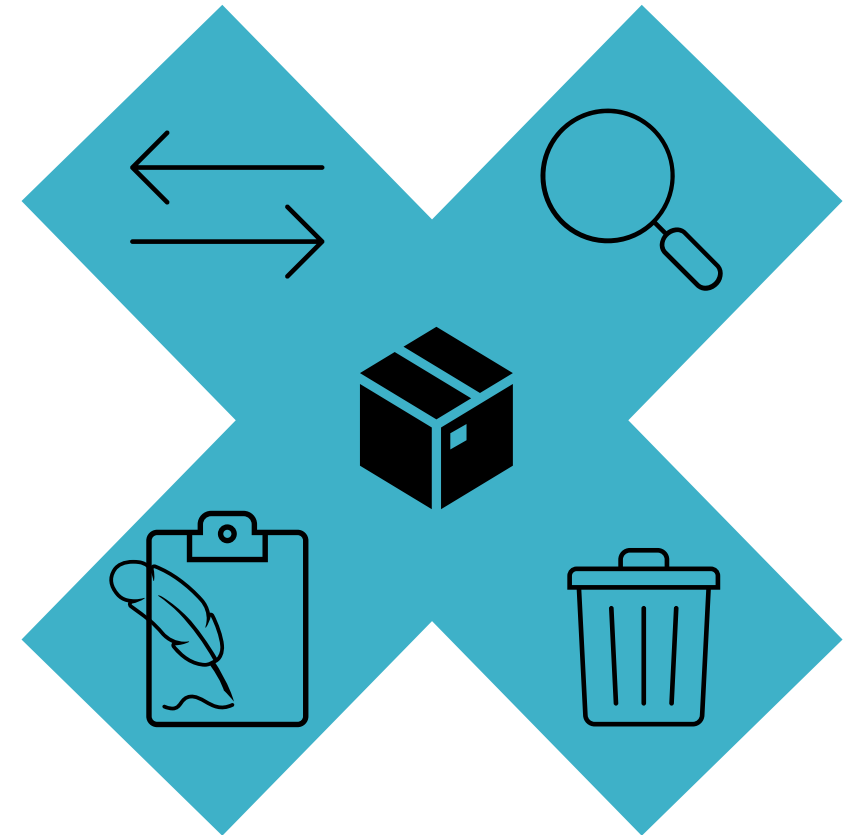
XFileV5

Makes Data Handling and Data Integrity easy

XFileV5 - Key Features

XFileV5

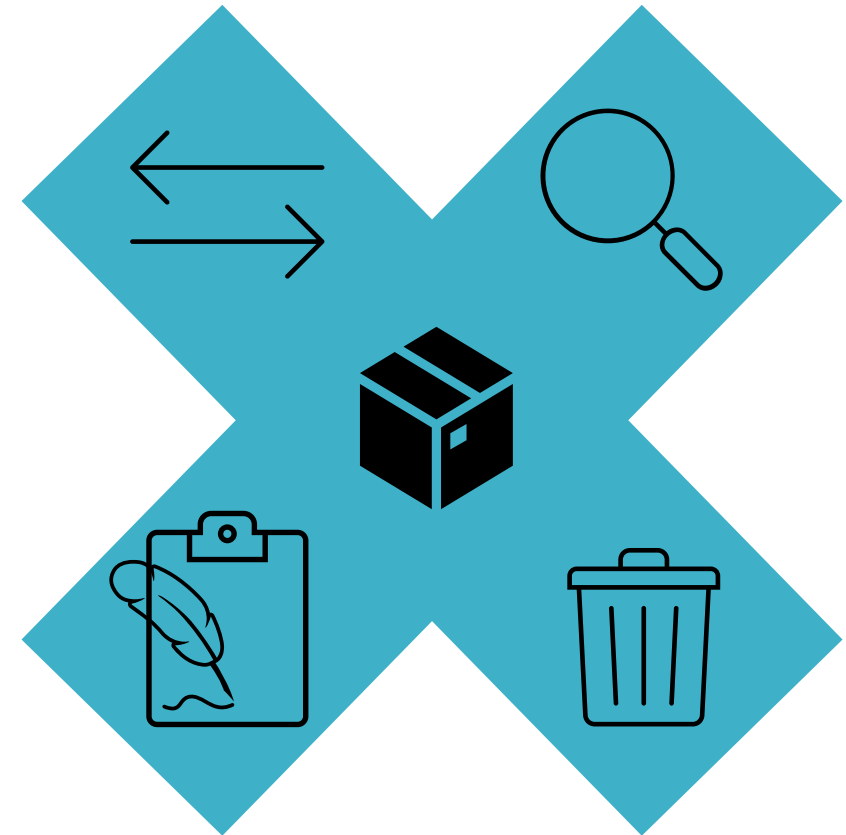
- DATA EXCHANGE
 - Aggregating Related Files: Gather all files associated to the root file into a container (.tar)
 - Unpacking and Saving: Unpacking .tar container and saving the complete CATIA V5 structure
- LINK ANALYSIS - CONSISTENT FILE SET
 - Directory Analysis: Analyse directories to identify relationships between root documents and linked documents
 - Missing File Detection: Identifying missing files ensures that the structure remain functional
- NAME & PROPERTY MODIFICATION
 - Bulk Modifications: Move a root document and all related files to a different location maintaining data consistency and link integrity
 - Batch property modifications: Rename file names, part numbers, revisions, and other properties collectively without manual intervention
- DELETE
 - Structural Deletion: structured approach to removing CATIA V5 structures or specific parts within structures
 - Selective File Retention: Choose files to be kept



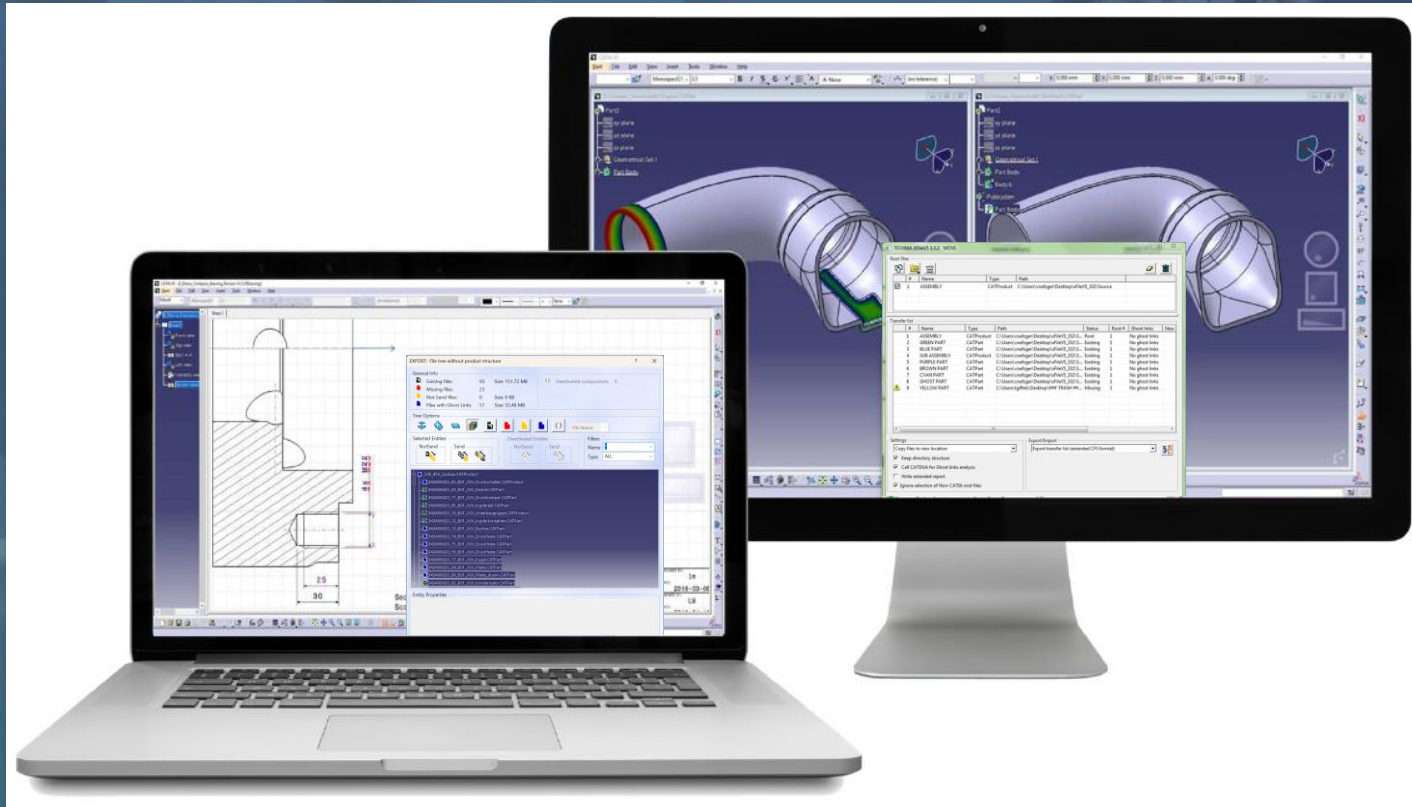
XFileV5 - User Benefits

XFileV5

- DATA EXCHANGE:
 - Efficient collaboration and sharing
 - Structured data archiving and backup
- LINK ANALYSIS - CONSISTENT FILE SET:
 - Maintained data integrity and accuracy
 - Generate insights of your data based on document relationships
 - Identify problems within datasets for early correction
- NAME & PROPERTY MODIFICATION:
 - Time savings through bulk changes
 - Enhanced data consistency and accuracy
- DELETE:
 - Controlled data removal without risks



XFILEV5 MAKES DATA HANDLING EASY



DATA EXCHANGE

CAD assembly structures can be complex. Maintaining this information accurately during data exchange can be challenging. XFileV5 improves the **COLLABORATION** and **DATA HANDLING** of CATIA V5 files.

DATA MIGRATION

Data migration projects, which involve transferring data from one system or environment to another, can be challenging due to various factors like data complexity, data volume, data quality, etc. XFileV5 analyzes assembly structures and **MAINTAINING DATA INTEGRITY AND ACCURACY**.

XFileV5

FOUR USE CASES

1. DATA EXCHANGE packages

- Identification of root document
- Verification of links
- Creation of tar container including all documents
- XML file as delivery note

2. LINK ANALYSIS - CONSISTENT FILE SET

- Analysis of directories
- Identification of Root documents, linked documents, missing files

3. NAME & PROPERTY MODIFICATION - MOVE

- Transfer CATIA V5 documents to a different directory
- Modify files names
- Add/Modify/Delete properties

4. DELETE

- Delete structured CATIA V5 documents



DATA EXCHANGE packages

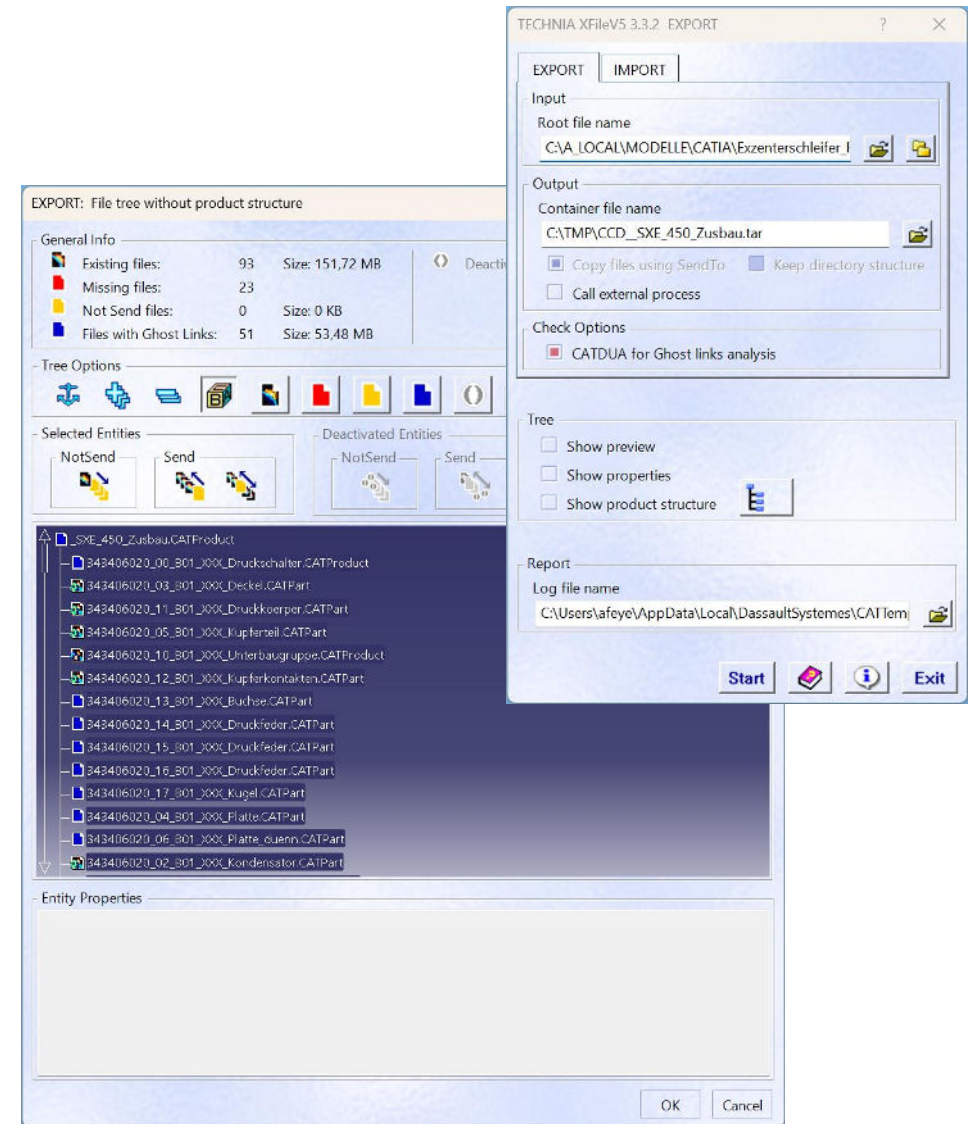
1. Export

- The user just selects a root document
- Exchange data will be put in one container with all linked documents
- Verifying if all linked objects are embedded for the root documents
- Along with the container a XML file reports the link structure

2. Import

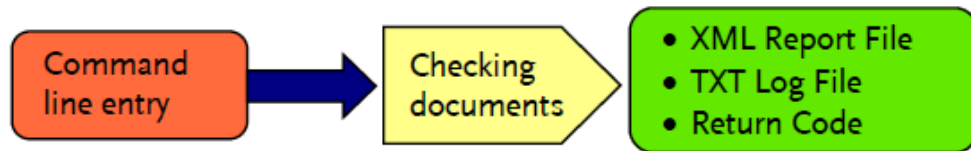
- Analyzing incoming container, if complete
- Listing all root documents and linked objects
- Listing missing documents
- User can load files in CATIA directly or save to disk

Operates interactively in CATIA, in external User Interface and as command line batch



LINK ANALYSIS - CONSISTENT FILE SET

- Command-line based checking tool that controls the consistency of CATIA V5 document sets in a specified directory
- The tool is primarily intended to be used
 - to check incoming and outgoing CATIA V5 document sets on their consistence
 - to analyze files systems and find root documents and their linked components, e.g., as preparation of a PDM project



Operates interactively in CATIA and as command line batch

```
@rem XFileV5Cfs Consistent file set
@rem
@rem
@rem argument 1: directory name
@rem argument 2: path of the xml file
@rem argument 3: path of the log file
@rem
@rem
echo [%date%, %time%]
C:\catiaV5\B28\win_b64\code\bin\catstart -env XFileV5R28_331 -direnv "c:\
ProgramData\DassaultSystemes\CATEnvR28" -run "TCAXFileV5CfsMd -d c:\A_LOCAL\
MODELLE\ -o c:\tmp\out3.xml -l c:\tmp\out3.log"
echo [%date%, %time%]
```

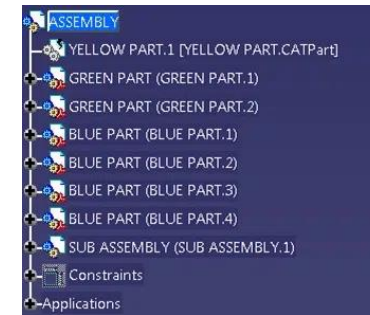
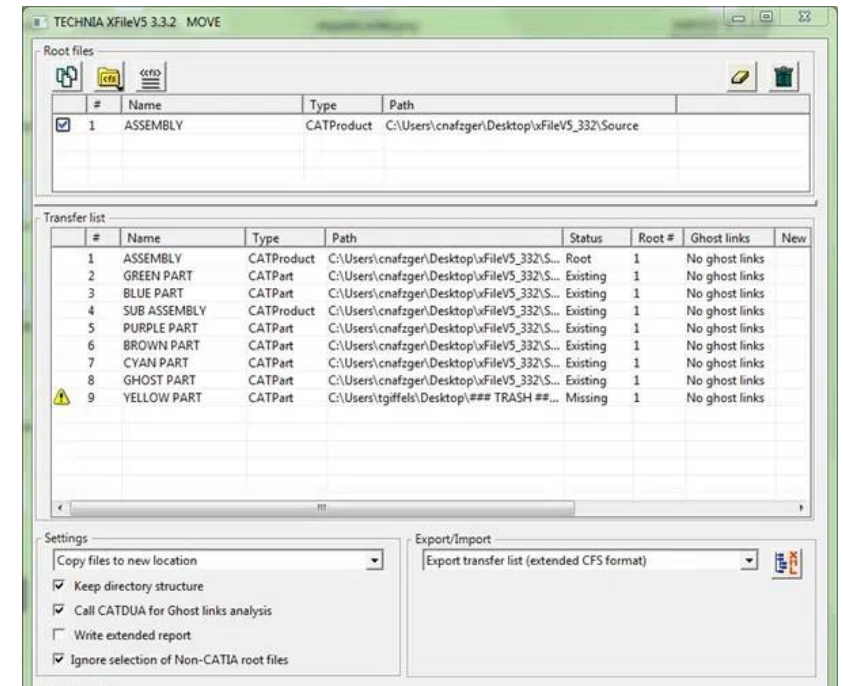
```
<?xml version="1.0" encoding="UTF-8"?>
<CVS_CONSISTENT_FILE_SET>
  <ROOT_FILE STATUS="EXISTING" NAME="V1014036_BA_006_AS_ZB_GRUNDTRAEGER_FOT_V
020712.CATProduct" DIRECTORY="c:\
A_LOCAL\MODELLE\V1014036_Release_006" TYPE="CATProduct" LAST_SAVE_NAME="V1014036_BA_006_AS_ZB_GRUNDTRAEGER_FOT_V
020712.CATProduct" LAST_SAVE_DIRECTORY="WORK" LAST_SAVE_VERSION="V5R19SP9HF96">
    <FILE STATUS="EXISTING" NAME="1195072X_BA_002_F3_CHROMRAHMEN_FOT
050511.CATPart" DIRECTORY="c:\
A_LOCAL\MODELLE\V1014036_Release_006" TYPE="CATPart" LAST_SAVE_NAME="1195072X_BA_002_F3_CHROMRAHMEN_FOT
050511.CATPart" LAST_SAVE_DIRECTORY="WORK" LAST_SAVE_VERSION="V5R19SP9HF96"/>
    <FILE STATUS="EXISTING" NAME="1195077X_BA_003_F3_GRIFFMULDE_FOT
050511.CATPart" DIRECTORY="c:\
A_LOCAL\MODELLE\V1014036_Release_006" TYPE="CATPart" LAST_SAVE_NAME="1195077X_BA_003_F3_GRIFFMULDE_FOT
050511.CATPart" LAST_SAVE_DIRECTORY="WORK" LAST_SAVE_VERSION="V5R19SP9HF96"/>
    <FILE STATUS="EXISTING" NAME="1140129X_BA_004_F3_ZB_BEFESTIGUNG_ELEMENTE_FOT_V
080312.CATPart" DIRECTORY="c:\
A_LOCAL\MODELLE\V1014036_Release_006" TYPE="CATPart" LAST_SAVE_NAME="1140129X_BA_004_F3_ZB_BEFESTIGUNG_ELEMENTE_FOT_V
080312.CATPart" LAST_SAVE_DIRECTORY="WORK" LAST_SAVE_VERSION="V5R19SP9HF96"/>
    <FILE STATUS="EXISTING" NAME="1222005X_BA_003_F3_VLIES_BLINDECKEL_MEM
291111.CATPart" DIRECTORY="c:\
A_LOCAL\MODELLE\V1014036_Release_006" TYPE="CATPart" LAST_SAVE_NAME="1222005X_BA_003_F3_VLIES_BLINDECKEL_MEM
291111.CATPart" LAST_SAVE_DIRECTORY="WORK" LAST_SAVE_VERSION="V5R19SP9HF96"/>
    <FILE STATUS="EXISTING" NAME="Faurecia_006.jt" DIRECTORY="c:\A_LOCAL\MODELLE" TYPE="jt" LAST_SAVE_NAME="
NOT_AVAILABLE" LAST_SAVE_DIRECTORY="NOT_AVAILABLE" LAST_SAVE_VERSION="NOT_AVAILABLE"/>
    <FILE STATUS="EXISTING" NAME="1222006X_BA_006_F3_TRAEGER_BLINDECKEL_MEM
291111.CATPart" DIRECTORY="c:\
A_LOCAL\MODELLE\V1014036_Release_006" TYPE="CATPart" LAST_SAVE_NAME="1222006X_BA_006_F3_TRAEGER_BLINDECKEL_MEM
291111.CATPart" LAST_SAVE_DIRECTORY="WORK" LAST_SAVE_VERSION="V5R19SP9HF96"/>
    <FILE STATUS="EXISTING" NAME="1222007X_BA_005_F3_GITTER_BLINDECKEL_MEM
131211.CATPart" DIRECTORY="c:\
A_LOCAL\MODELLE\V1014036_Release_006" TYPE="CATPart" LAST_SAVE_NAME="1222007X_BA_005_F3_GITTER_BLINDECKEL_MEM
131211.CATPart" LAST_SAVE_DIRECTORY="WORK" LAST_SAVE_VERSION="V5R19SP9HF96"/>
    <FILE STATUS="EXISTING" NAME="1139981X_BA_020_F3_SCHALTER_BLENDE_FH_4FACH_FOT
291111.CATPart" DIRECTORY="c:\
A_LOCAL\MODELLE\V1014036_Release_006" TYPE="CATPart" LAST_SAVE_NAME="1139981X_BA_020_F3_SCHALTER_BLENDE_FH_4FACH_FOT
291111.CATPart" LAST_SAVE_DIRECTORY="WORK" LAST_SAVE_VERSION="V5R19SP9HF96"/>
```

XFileV5

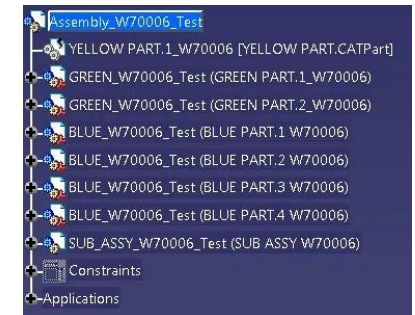
NAME & PROPERTY MODIFICATION

- MOVE identifies the root documents in this directory and optionally in all subdirectories
- MOVE sends selected CATIA root documents and all linked documents to a new location, and updates the links between these files
- Save a transfer list as XML file with the ability to modify file names or adding and changing of properties

Operates interactively in CATIA



**B
E
F
O
R
E**



**A
F
T
E
R**

Name	Größe Auto...
..	
ASSEMBLY.CATProduct	374 kB
BLUE PART.CATPart	117 kB
BROWN PART.CATPart	374 kB
CYAN PART.CATPart	83 kB
GHOST PART.CATPart	209 kB
GREEN PART.CATPart	147 kB
PURPLE PART.CATPart	518 kB
SUB ASSEMBLY.CATProduct	56 kB
YELLOW PART_aaa.CATPart	261 kB

Name	Größe Auto...
..	
Blue_W70006_Test.CATPart	109 kB
Brown_W70006_Test.CATPart	334 kB
Cyan_W70006_Test.CATPart	79 kB
Ghost_W70006_Test.CATPart	185 kB
Green_W70006_Test.CATPart	143 kB
Purple_W70006_Test.CATPart	405 kB
RootProduct_W70006_Test.CATP...	375 kB
SubAssy_W70006_Test.CATProduct	56 kB

XFileV5

DELETE

- Secure deletion of CATIA documents
 - Secure mode checks whether the selected documents are referenced by other documents situated inside the current directory

- The DELETE operation is recorded in a log file

Operates interactively in CATIA

